

ELECTRICAL PLUG LOCKOUT

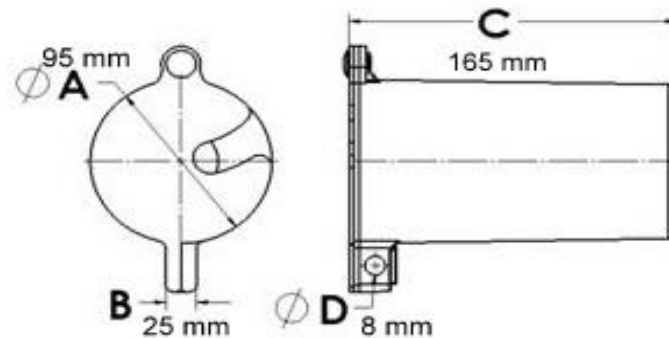
The Plug Lockout accommodates high and low voltage electrical plugs up to 3" in diameter and 5 ½" in length. Two sliding top lids can be used individually or together to fit small, medium and large diameter cords up to 1 ¼".



The OSHA standard for The Control of Hazardous Energy (Lockout/Tagout): Title 29 (CFR) Part 1910.147

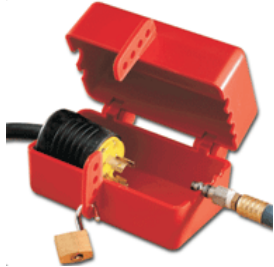
PRODUCT DESCRIPTION	PRODUCT CODE
Electrical Plug Lockout	LM-PL

MATERIAL OF CONSTRUCTION: Polypropylene, Yellow Color



PNEUMATIC PLUG LOCKOUT - BIG

The OSHA standard for The Control of Hazardous Energy (Lockout/Tagout): Title 29 (CFR) Part 1910.147



Avoid electrical accidents by applying lockouts to prevent plugs from being inserted into a wall outlet. Use when plug will not remain under the exclusive control of the person performing service or maintenance. Device is made of rugged engineering plastic and is designed for 250/500V electrical plugs. It Includes danger message printed on the device to alert workers of lockout program in progress. Can also be used to lockout air hose nipples.



PRODUCT DESCRIPTION

Pneumatic Plug Lockout - Big

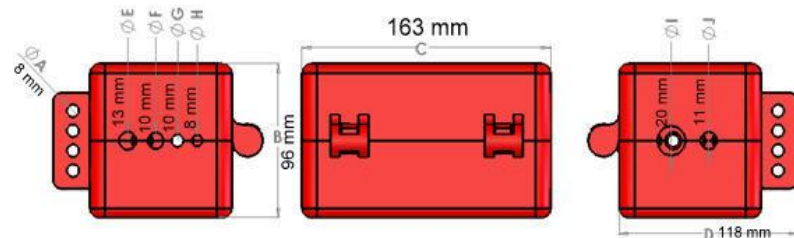
PRODUCT CODE

LM-PPL-BIG

MATERIAL OF CONSTRUCTION: Acrylonitrile Butadiene Styrene

INSTRUCTIONS FOR USE

Adjust the lockout device to suit the electrical plug, bring the lockout device to the close position and apply the padlock to secure the electrical plug. Make sure the plug cannot be removed from the lockout device once the padlock is applied.



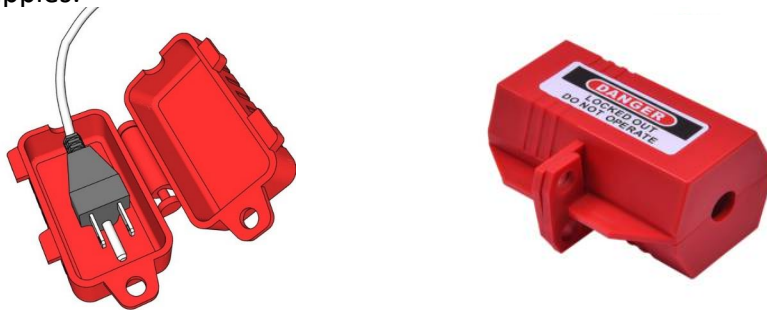
Your Lockout / Tagout Expert

www.lotomaster.eu

PNEUMATIC PLUG LOCKOUT - SMALL

The OSHA standard for The Control of Hazardous Energy (Lockout/Tagout): Title 29 (CFR) Part 1910.147

Avoid electrical accidents by applying lockouts to prevent plugs from being inserted into a wall outlet. Use when plug will not remain under the exclusive control of the person performing service or maintenance. Device is made of rugged engineering plastic and is designed for 250/500V electrical plugs. It Includes danger message printed on the device to alert workers of lockout program in progress. Can also be used to lockout air hose nipples.



PRODUCT DESCRIPTION

PRODUCT CODE

Pneumatic Plug Lockout - Small

LM-EPL-5189

MATERIAL OF CONSTRUCTION: Acrylonitrile Butadiene Styrene



INSTRUCTIONS FOR USE

Adjust the lockout device to suit the electrical plug, bring the lockout device to the close position and apply the padlock to secure the electrical plug. Make sure the plug cannot be removed from the lockout device once the padlock is applied.



Your Lockout / Tagout Expert

www.lotomaster.eu